



PCM/G+



INSTALLER MANUAL

INDEX

1. Device description.....	3
2. Connection.....	4
2.1. Connection to the monitor.....	4
2.2. Connection to the door opener.....	4
3. Operation	5

1. DEVICE DESCRIPTION

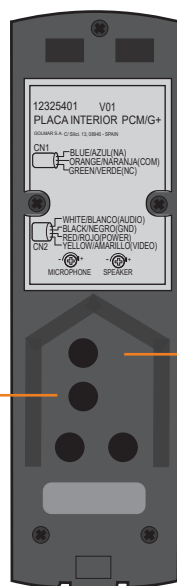
Private call interior panel designed to be directly connected to the monitor and perform the functions of doorbell for the apartment door. It is necessary to use a 6502/G+ entry panel or a Nexa panel modular composition for its operation. Es necesario el uso de una placa exterior 6502/G+ o una composición de placa Nexa modular para su funcionamiento.

Camera with 70° viewing angle.

Night vision leds



Call pushbutton



CN2 (Monitor connection wire)

CN1 (Door opener connection wire)

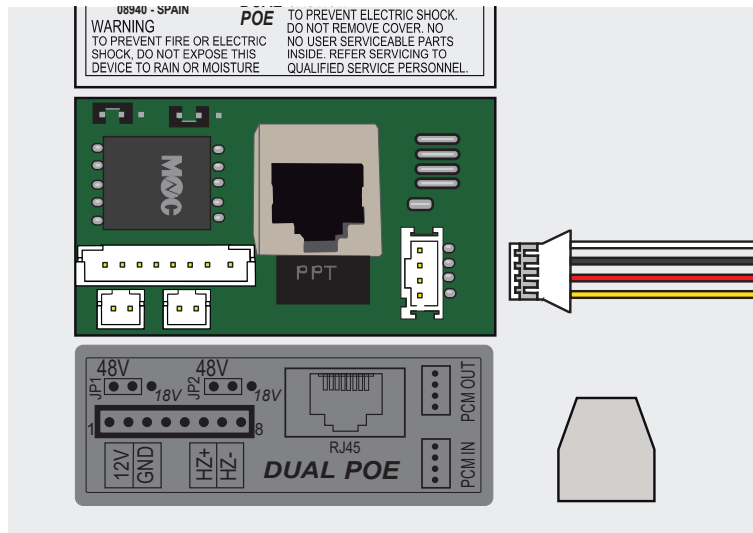
2. CONNECTION

2.1. Connection to the monitor:

For connecting the PCM/G+ interior panel to the monitor, we must connect the coloured wires of the monitor connection wire (CN2) with the connector supplied matching both coloured wires.

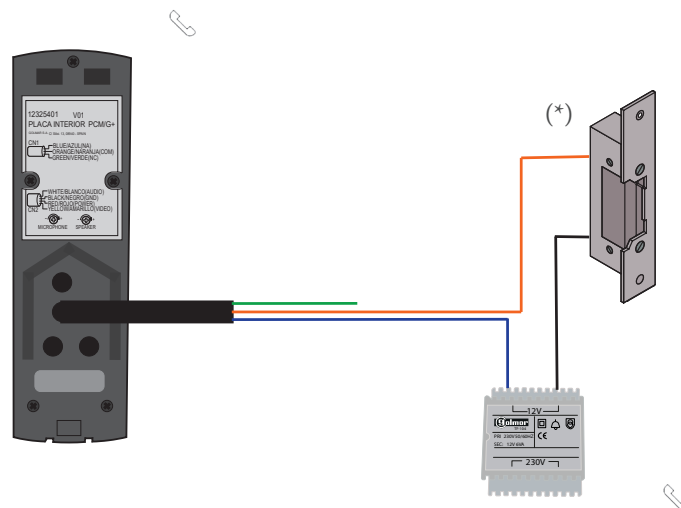
Once done the step described before, we will plug the connector in the PCM IN port located in the backside of the monitor.

Monitors suitable for connection PCM/G+ interior panels are the ART 7G+/PCM, the ART 7W/G+/PCM and the Android monitor ART 7AW/G+



2.2. Connection to the door opener

For connecting the PCM/G+ interior panel with the door opener, we will need to add a TF-104 AC power supply. To do the connection, we will connect the coloured wires of the door opener connection wire (CN2) in the next way:



(*) Important: Place a varistor directly over the door opener connection terminals.

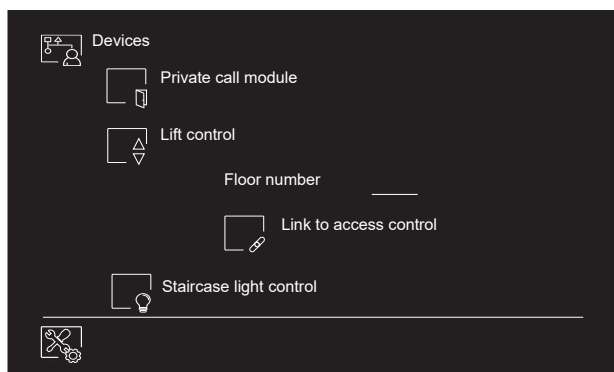
3. OPERATION

Once we have connected the PCM/G+ interior panel to the monitor and the door opener, we will need to enable it accessing the “Devices” section in the system settings menu. Then, just press the call pushbutton to make a call to the apartment monitor.

The monitor will be able to answer the call and open the door from the communication screen.

In case of a call from the PCM/G+ interior panel when the monitor is in communication with the door entry panel, a notification will appear in the communication screen reporting the user that such a call is taking place.

If you want to preview images from the PCM/G+ interior panel only press the  icon in the right bottom of the “View” screen.





C/ Silici 13. Poligon Industrial Famadas
08940 – Cornellà del Llobregat – Spain
golmar@golmar.es
Telf: 934 800 699
www.golmar.es